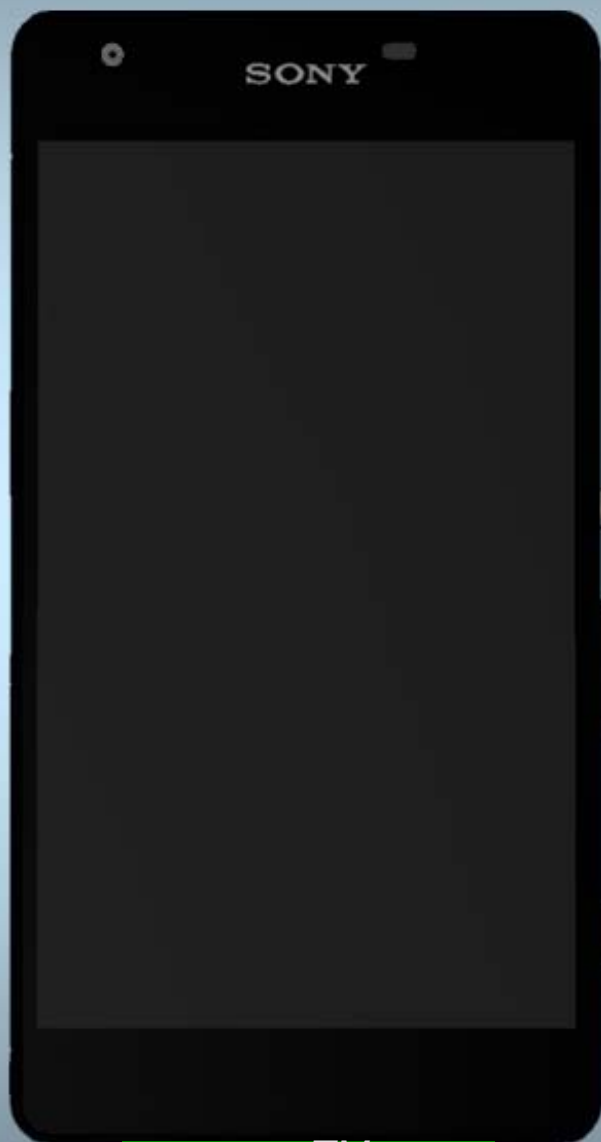


SONY

make.believe

Repair Movies

- mechanical -



Xperia™ Z2a

D6563

CONTENTS

1	Movies.....	3
1.1	Disassembly	3
1.2	Reassembly	3
2	Revision History.....	4

To view the embedded repair movies in this document, Acrobat Reader version 8 (or later) and Flash Player version 8 (or later) must be installed on your computer.

***For best picture quality, select “Actual size” or “100%” as zoom level in Acrobat Reader.
To magnify while keeping an acceptable picture quality, increase the zoom level to 200%.***

If the movies appear to be jerky or blurred when viewing on-line, this is probably caused by the connection speed being too slow.

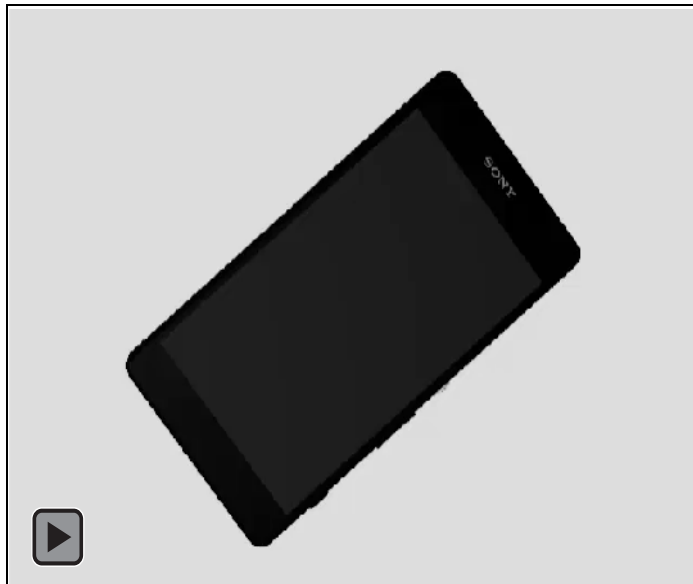
In that case, right-click with the mouse on the document name and select Save Target As to download the repair movie document for off-line viewing.

***For general information about repair movies, refer to
1220-1333: Generic Repair Manual - mechanical***

1 Movies

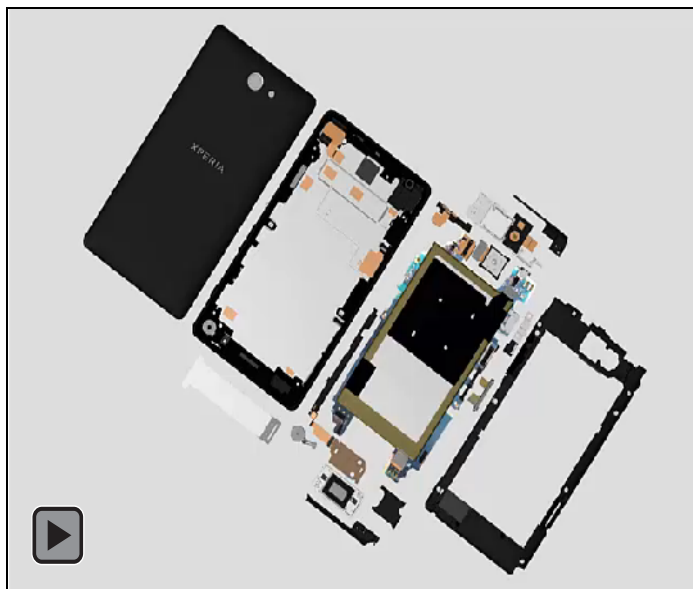
1.1 Disassembly

1. SIM Tray
2. Back Panel
3. Holder Battery
4. FPC Key & Holder Speaker
5. Spacer USB & Plate USB
6. Camera & Holder Receiver
7. Top FPC
8. Main PBA with Battery



1.2 Reassembly

1. Cover Front & Main PBA & Battery
2. Sub Antenna(a) & FPC Top(b)
3. Holder Receive & Holder Top
4. Main Camera & Holder Main Camera
5. Plate USB & Spacer USB
7. Main Antenna
8. Holder Speaker(a) & FPC Key(b)
9. Holder Battery(a) & Back Panel
10. SIM Tray



2 Revision History

Rev.	Date	Changes / Comments
1	2014-July-2	Initial release